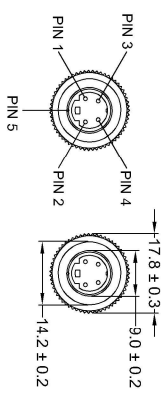
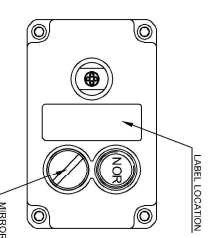
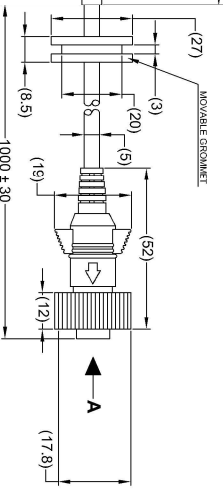
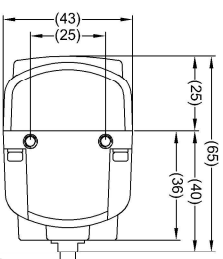
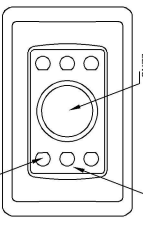
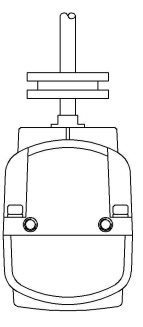
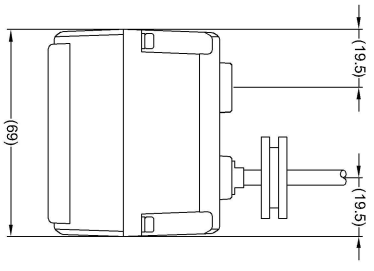


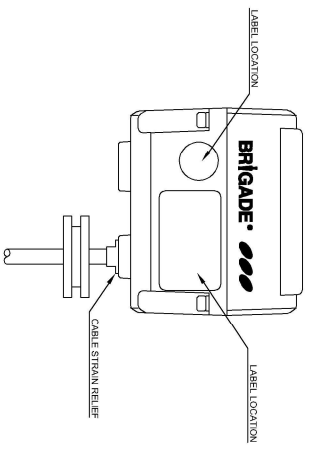
TABLE 1: BE-89XC CAMERA ONLY OPTIONS

PART NO.	MODEL NO.	DESCRIPTION	FIRMWARE VER.
3288E	BE-890C-C	CAMERA, ELITE, HEATED, ULTRA-LOW-LIGHT, P.A.L., NO AUDIO, CAMERA ONLY	MA-A100P-FOC-MP-REV1.0(190920)
5427A	BE-891C-C	CAMERA, ELITE, HEATED, ULTRA-LOW-LIGHT, NTSC, NO AUDIO, CAMERA ONLY	MA-A100N-FOC-MP-REV1.0(190920)



VIEW A

PIN #	WIRE COLOUR	DESCRIPTION
1	YELLOW	VIDEO
2	RED	+12V
3	BLUE	N/C
4	WHITE	N/C
5	BLACK/SHIELD	GND



- NOTES:
- REFER TO PRODUCT SPECIFICATION FOR MORE DETAILS.
 - FOR PRODUCT LABEL AND PACKAGING INFORMATION REFER TO MASTER BOM
 - ANY CUSTOMER MODIFICATION OF THIS PRODUCT CAUSING SUBSEQUENT FAILURE IS NOT A LIABILITY OF BRIGADE ELECTRONICS PLC.
 - REFER TO TABLE 1 FOR FACTORY INSTALLED FIRMWARE VERSIONS.

PROPRIETARY NOTICE
 THIS DESIGN AND TECHNICAL INFORMATION APPEARING ON THIS DRAWING IS THE PROPERTY OF BRIGADE ELECTRONICS, AND IS DISCLOSED IN CONFIDENCE. IT IS NOT TO BE COPIED, REPRODUCED, REVEALED TO OR EXPLOITED BY OTHERS, EITHER IN WHOLE OR IN PART WITHOUT THE EXPRESS WRITTEN CONSENT OF BRIGADE ELECTRONICS.

Revision Notes:				
RT -	Drawn:	Checked:	Approved:	Date:
APPA				

BRIGADE
 www.brigade-electronics.com

Assembly PI Approval	Approved by	Checked by	Drawn by
T.CHOI	S.LAVER	J.TYRELL	S.GOVENDER
Angle of Projection	Units	Scale	Released
Third Angle	mm	N/A	17/09/20
Status	Released	Assembly Ref	
RELEASED			BE-89XC-C
Part No	BE-004433-00-20		
SEE TABLE 1			

